

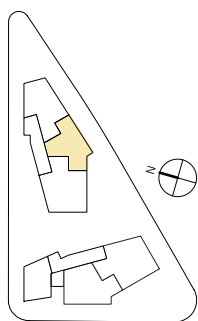
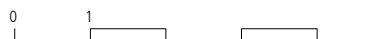
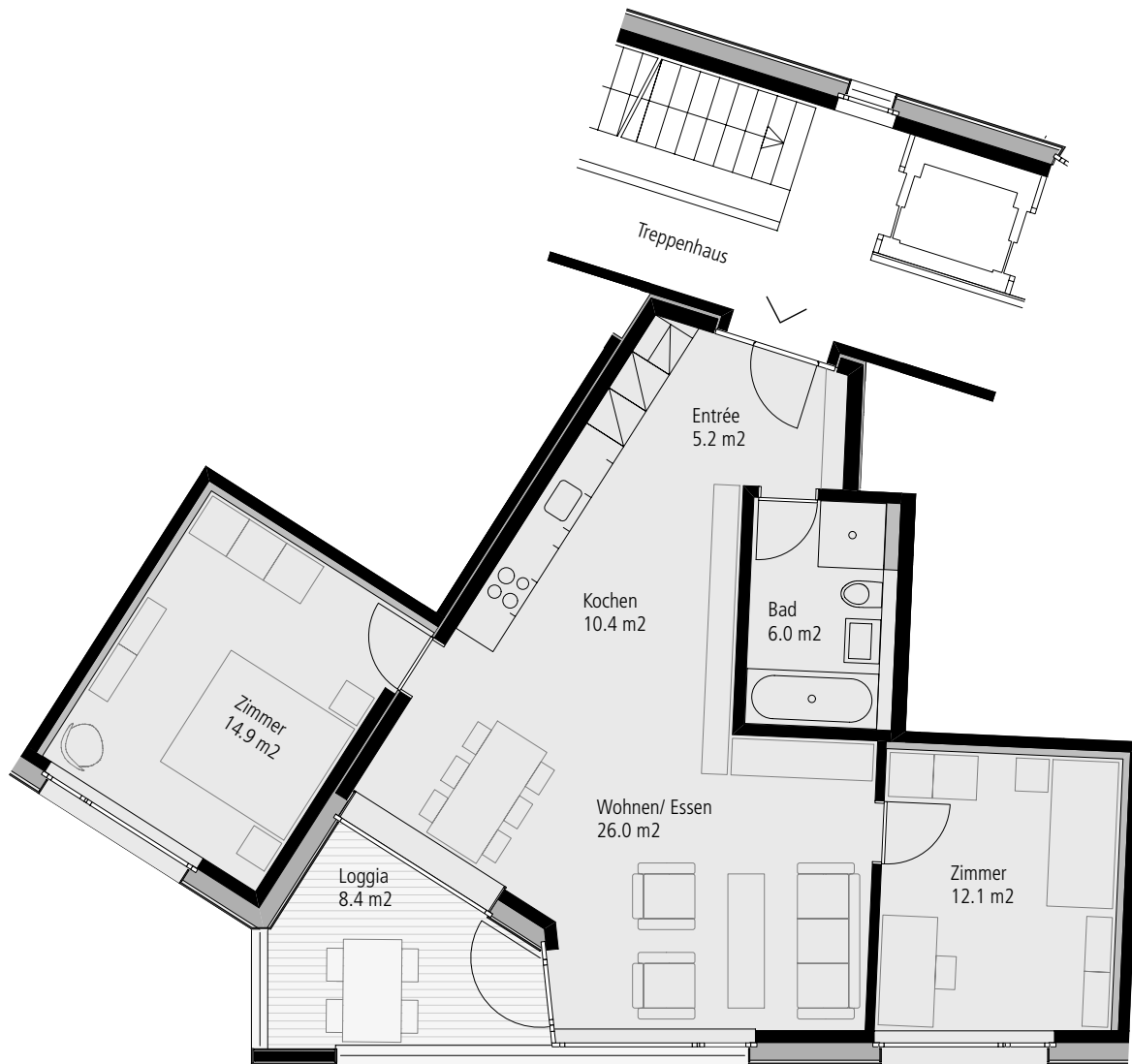
# chutzenweg 1

## 3.5 zimmerwohnung hp

### primula 2

nettowohnfläche: 74.6 m<sup>2</sup>

loggia: 8.4 m<sup>2</sup>



Situation

10			Attika
9	8	7	2. OG
6	5	4	1. OG
3	2	1	HP
EH			UG

Chutzenweg 1